

GARDEN PRODUCE EXHIBITS

(These exhibits will be received between the hours of 8 a.m. and 6 p.m.
on Tuesday, June 29, 2010.)

1. The exhibitor must have grown all exhibits.
2. All General Rules and Regulations apply, including those specific to Garden Produce.
3. An individual may enter as many classes as they wish in the division, but can enter only one item per class.

4. *Amateurs only!*

Standards for Garden Produce:

Vegetables and fruit should be in the best "eating stage" for the local market. Exhibits should be of the same variety and typical of that variety, uniformity of size and color, and free from disease and insect damage.

Class	Division	Exhibit Description	Key
001	Fresh Fruit	Apples (4)	A
002	Fresh Fruit	Berries (at least ½ pint)	A
003	Fresh Fruit	Cherries (at least ½ pint)	A
004	Fresh Fruit	Misc. Fruit (at least ½ pt small fruit or 3 pieces of large fruit)	A
005	Fresh Fruit	Tomatoes, Cherry (6)	A
006	Fresh Fruit	Tomatoes, Red (4)	A
007	Fresh Fruit	Tomatoes, Yellow (4)	A

Class	Division	Exhibit Description	Key
008	Fresh Vegetable	Beans – Flat, String (8)	A
009	Fresh Vegetable	Beans – Round, String (8)	A
010	Fresh Vegetable	Beets (6 in a bunch)	A
011	Fresh Vegetable	Cabbage (1 head)	A
012	Fresh Vegetable	Carrots (6)	A
013	Fresh Vegetable	Cucumbers (3)	A
014	Fresh Vegetable	Garden Basket (variety of 5 vegs)	A
015	Fresh Vegetable	Onions, Green (4)	A
016	Fresh Vegetable	Onions, Red	A
017	Fresh Vegetable	Onions, Miscellaneous (4)	A
018	Fresh Vegetable	Peppers, Hot (6)	A
019	Fresh Vegetable	Peppers, Sweet (3)	A
020	Fresh Vegetable	Potatoes, Red Skinned (4)	A
021	Fresh Vegetable	Potatoes, White (4)	A
022	Fresh Vegetable	Squash, Yellow Summer (2)	A
023	Fresh Vegetable	Squash, Zucchini (2)	A
024	Fresh Vegetable	Most Unusual Vegetable	A
025	Fresh Vegetable	Decorated Vegetable	A
026	Fresh Vegetable	Misc., Any vegetable not listed	A

FOOD EXHIBITS

(These exhibits will be received between the hours of 8 a.m. and 6 p.m.
on Tuesday, June 29, 2010.)

1. All canned products, preserves, or pickles must be in clear glass, mason, tempered, canning jars and properly labeled. Vegetables, fruits and juices must be in *PINT* or *QUART* clear **mason-canning jars**. (No mayonnaise jars, etc., will receive awards.)
2. Jellies, jams, and preserves must be in clear standard pint jars, half-pint jars/jelly jars, or four-ounce jelly jars.
3. When self-seal lids are used, rings should be on jars.
4. Any jar may be opened at the discretion of the judges.
5. All canned food should be properly sealed.
6. Only one entry can be made by any individual in each class.
7. All food items must be accompanied with the recipe printed or typed on a 3" x 5" card. By entering a food item, exhibitor gives Salem Fair Management a right to publish recipe with exhibitor name and city. Recipe becomes property of the Fair. At check-in, please put your exhibitor number (not your name) on the recipe card.
8. All General Rules and Regulations apply, including those specific to canned and baked goods.
9. ***Amateurs only!***
10. One box of canning jars will be awarded to Best in Show in Canned Fruit, Canned Vegetable, Pickles, Jellies, Jams, and Preserves Divisions

Standards for Vegetables and Fruits:

Natural fruit or vegetable color; syrup or liquid clear; tender characteristic flavor. Well ripened but not overripe, graded and sorted size.

Class	Division	Exhibit Description	Key
030	Canned Fruit	Apples	A
031	Canned Fruit	Applesauce	A
032	Canned Fruit	Berries	A
033	Canned Fruit	Cherries, seeded	A
034	Canned Fruit	Peaches	A
035	Canned Fruit	Pears	A
036	Canned Fruit	Tomatoes	A
037	Canned Fruit	Tomato juice	A
038	Canned Fruit	Miscellaneous Canned Fruit	A
Class	Division	Exhibit Description	Key
039	Canned Vegetable	Beets	A
040	Canned Vegetable	Butter Beans	A
041	Canned Vegetable	Carrots, sliced	A
042	Canned Vegetable	Corn, yellow or white	A
043	Canned Vegetable	Green Beans	A
044	Canned Vegetable	Greens	A
045	Canned Vegetable	Mixed Vegetables	A
046	Canned Vegetable	Peas	A
047	Canned Vegetable	Salsa	A
048	Canned Vegetable	Squash, sliced	A

048	Canned Vegetable	Misc. Canned Vegetable	A
Class	Division	Exhibit Description	Key
051	Breads	Yeast Rolls (6)	A
052	Breads	Biscuits (6)	A
053	Breads	Muffins (6)	A
054	Breads	Miscellaneous Quick Bread	A
055	Breads	Miscellaneous Yeast Bread	A
057	Breads	Loaf Yeast Bread, White	A
058	Breads	Loaf Yeast Bread, Whole Grain	A
059	Breads	Loaf Yeast Bread, Fruit or Nut	A
060	Breads	Creative item made w/canned biscuit/bread dough	A
061	Breads	Bread Machine Item	A
Class	Division	Exhibit Description	Key
063	Cookies	Bar Cookies (6)	A
064	Cookies	Chocolate Chip (6)	A
065	Cookies	Peanut Butter Cookies (6)	A
066	Cookies	Rolled Cookies (6)	A
067	Cookies	Healthy (such as low fat, fat free, etc.)	A
068	Cookies	Original Recipe (6) (developed by exhibitor)	A
069	Cookies	Drop Cookies (6)	A
070	Cookies	Misc., any cookie not listed above	A
Class	Division	Exhibit Description	Key
071	Cake	Red Velvet (1/2 accepted)	A
072	Cake	Cheese Cake – plain (1/2 accepted)	B
073	Cake	Cheese Cake – other (1/2 accepted)	B
074	Cake	Chocolate Iced Layer (1/2 accepted)	A
075	Cake	Other Iced Layer (1/2 accepted)	A
076	Cake	Devil's Food (1/2 accepted)	A
077	Cake	Cupcakes, Iced (3)	A
078	Cake	Gingerbread	A
079	Cake	Coconut (1/2 accepted)	A
080	Cake	Decorated – Children's Party	B
081	Cake	Decorated – Other than sheet	B
082	Cake	Decorated – Sheet	B
083	Cake	Fresh Fruit or Vegetable (apple, zucchini, carrot, etc. – 1/2 accepted)	A
084	Cake	German Chocolate (1/2 accepted)	A
085	Cake	Pound (1/2 accepted)	B
086	Cake	Spice (1/2 accepted)	A
087	Cake	Healthy (such as low fat/sugar free,etc)	A
088	Cake	Creative Cake from Mix	A
089	Cake	Misc. any cake not listed above (1/2 accepted)	A

Class	Division	Exhibit Description	Key
090	Candy	Caramel (6)	A
091	Candy	Chocolate Fudge (6)	A
092	Candy	Peanut Butter Fudge (6)	A
093	Candy	Peanut Brittle	A
094	Candy	White Chocolate	A
095	Candy	Molded Mints (6)	A
096	Candy	Molded Candies (other than mints)	A
097	Candy	Coconut (6)	A
098	Candy	Misc., any candy not listed above	A

Class	Division	Exhibit Description	Key
099	Pies	Fruit (any), 2 crust	A
100	Pies	Chess (any)	A
101	Pies	Chocolate	A
102	Pies	Coconut	A
103	Pies	Lemon Meringue	A
104	Pies	Pecan	A
105	Pies	Healthy (low fat, fat free, etc.)	A
106	Pies	Misc., any pie not listed above	A

Class	Division	Exhibit Description	Key
110	Jelly	Apple	A
111	Jelly	Blackberry	A
112	Jelly	Raspberry	A
113	Jelly	Strawberry	A
114	Jelly	Grape	A
115	Jelly	Crabapple	A
116	Jelly	Pepper	A
117	Jelly	Mixed Fruit (combination of two or more fruits/berries)	A
118	Jelly	Misc., any jelly not listed above	A

Class	Division	Exhibit Description	Key
120	Jam	Blackberry	A
121	Jam	Strawberry	A
123	Jam	Raspberry	A
124	Jam	Grape	A
125	Jam	Mixed Fruit (combination of two or more fruits/berries)	A
126	Jam	Misc., any jam not listed above	A

Class	Division	Exhibit Description	Key
129	Preserves	Apple Butter	A
130	Preserves	Berry (other than strawberry)	A
131	Preserves	Cherry	A
132	Preserves	Chutney	A
133	Preserves	Damson	A
134	Preserves	Peach	A
135	Preserves	Pear	A
136	Preserves	Plum	A
137	Preserves	Strawberry	A
138	Preserves	Mixed Fruit (combination of two or more)	A
139	Preserves	Misc., any not listed above	A

Class	Division	Exhibit Description	Key
140	Pickles	Beet	A
141	Pickles	Bread and Butter	A
142	Pickles	Chow Chow	A
143	Pickles	Dill	A
144	Pickles	Pickled Peaches	A
145	Pickles	Sweet Cucumber, sliced	A
146	Pickles	Sweet Cucumber, whole	A
147	Pickles	Mixed Vegetable Pickles(no cucumber)	A
148	Pickles	Sweet Mixed Pickle	A
149	Pickles	Relish, any flavor	A
150	Pickles	Green Tomato Pickle	A
151	Pickles	Watermelon Rind	A
152	Pickles	Misc., any pickles not listed above	A

HORTICULTURE EXHIBITS

(These exhibits will be received between the hours of 8 a.m. and 6 p.m. on Tuesday, June 29, 2010)

1. The Horticulture Events may be entered by any non-professional flower grower or Designer Exhibits must be grown by the exhibitor.
2. All General Rules and Regulations apply, including those specific to Horticulture. Fresh cut flowers may be replaced by exhibitor once during Fair Week.
3. Exhibits should be labeled as to name of variety.
4. An individual may enter as many classes as they wish in the division, but can enter only one item per class.
5. **Amateurs only!**

Standards for plants and flowers:

Healthy and free of disease and insects; freshness; size and uniformity for the variety; color; good foliage; and maturity.

Class	Division	Exhibit Description	Key
153	Plants	African Violet	A
154	Plants	Any Flowering House Plant	A
155	Plants	Any Variety Fern	A
156	Plants	Cactus	A
157	Plants	Foliage House Plant	A
158	Plants	Miscellaneous Potted House Plant	A
159	Plants	Hanging Basket	A
160	Plants	Seniors Only (Age 65+)	A

Class	Division	Exhibit Description	Key
161	Cut Flowers	Dahlia (Single Stem)	A
162	Cut Flowers	Gladioli (Single Stem)	A
163	Cut Flowers	Herbs	A
164	Cut Flowers	Marigold (Single Stem)	A
165	Cut Flowers	Meadow Flowers (Queen Anne's Lace, Black-eyed Susan, etc.)	A
166	Cut Flowers	Zinnia (Single Stem)	A
167	Cut Flowers	Celosia (Single Stem)	A
168	Cut Flowers	Caladium (Single Stem)	A
169	Cut Flowers	Snapdragon (Single Stem)	A
170	Cut Flowers	Day Lily (Single Stem)	A
171	Cut Flowers	Calla Lily (Single Stem)	A
172	Cut Flowers	Miscellaneous Lily (Single Stem)	A
173	Cut Flowers	Yellow Rose (Single Stem)	A
174	Cut Flowers	Red Rose (Single Stem)	A
175	Cut Flowers	Rose (Single Stem) – color other than those listed above	A
176	Cut Flowers	Miscellaneous Cut Flower(Single Stem)	A
177	Cut Flowers	Arrangement of Cut Flowers	B
178	Cut Flowers	Arrangement – Seniors Only (Age 65+)	B

Class	Division	Exhibit Description	Key
179	Dried Flowers	Decorated Vine Wreath	A
180	Dried Flowers	Dried Flower Arrangement	A
181	Dried Flowers	Silk Flower Arrangement	A
182	Dried Flowers	Dried Flower Wreath	A
183	Dried Flowers	Silk Flower Wreath	A
184	Dried Flowers	Combination Dried and Silk Flower Arrangement	A
185	Dried Flowers	Arrangement – Seniors Only (Age 65+)	A

NEEDLEWORK EXHIBITS

(These exhibits will be received between the hours of 8 a.m. and 6 p.m.
on Tuesday, June 29, 2010.)

1. Exhibits must have been made by exhibitor between July 2009 and date of 2010 Fair. (The exceptions are the Antique Embroidery and Antique Quilt Classes.)
2. All General Rules and Regulations apply, including those specific to Needlework. An individual may enter as many classes as they wish in the division, but can **enter only one item per class.**
3. Frames with glass acceptable for embroidery and cross-stitch only.

4. Amateurs only!

Standards for needlework:

Design suitable to materials, pleasing and interesting; good color combinations;

Workmanship should be neat; durable, show originality.

Class	Division	Exhibit Description	Key
186	Crocheting	Afghan/Bedsread	B
187	Crocheting	Purse	A
188	Crocheting	Collars	A
189	Crocheting	Doilies	A
190	Crocheting	Infant's Set	A
191	Crocheting	Pillowcases, crocheted edge (1 pair)	A
192	Crocheting	Pillow Top	A
193	Crocheting	Sweater	A
194	Crocheting	Table Linens	B
195	Crocheting	Miscellaneous crocheted item	A

Class	Division	Exhibit Description	Key
196	Knitting	Afghan	B
197	Knitting	Infant's Set	A
198	Knitting	Socks	A
199	Knitting	Sweater, Adult	A
200	Knitting	Sweater, Child	A
201	Knitting	Winter Set (scarf, hat, gloves, etc.)	A
202	Knitting	Scarf (yarn, ribbon, thread, etc.)	A
203	Knitting	Knitted Toy	A
204	Knitting	Purse	A
205	Knitting	Miscellaneous	A

Class	Division	Exhibit Description	Key
206	Cross-Stitch	Baby Item	A
207	Cross-Stitch	Christmas Item	B
208	Cross-Stitch	Framed Picture on Aida/Hardanger	B
209	Cross-Stitch	Framed Picture on Linen	B
210	Cross-Stitch	Mottos	A
211	Cross-Stitch	Pillow Top	B
212	Cross-Stitch	Sampler	B

213	Cross-Stitch	Wall Hanging (unframed, but finished)	B
214	Cross-Stitch	Towels/Bed/Table Linens	B
215	Cross-Stitch	Afghan	B
216	Cross-Stitch	Bookmarks	A
217	Cross-Stitch	Perforated Paper	A
218	Cross-Stitch	Beaded Items	A
219	Cross-Stitch	Duplicate Stitch	B
220	Cross-Stitch	Pulled Thread Item	B
221	Cross-Stitch	Item Stitched on Canvas	B
222	Cross-Stitch	Hardanger Embroidery (cut work)	B
223	Cross-Stitch	Bread Basket Liners	A

Class	Division	Exhibit Description	Key
225	Embroidery	Antique Embroidery (over 50 years)	A
226	Embroidery	Christmas Item	B
227	Embroidery	Crewel	B
228	Embroidery	Needlepoint	B
229	Embroidery	Pillow Top (other than cross-stitch)	B
230	Embroidery	Silk Ribbon Embroidery	B
231	Embroidery	Smocking	B
232	Embroidery	Table Linens	B
233	Embroidery	Wall Hanging Stitchery (finished)	B
234	Embroidery	Woven Afghan	B
235	Embroidery	Miscellaneous Embroidery	B

Class	Division	Exhibit Description	Key
238	Machine Embroidery	Accessory (hat, bag, etc.)	B
239	Machine Embroidery	Shirt or blouse	B
240	Machine Embroidery	Skirt, dress, jumper or jacket	B
241	Machine Embroidery	Children's item	B
242	Machine Embroidery	Holiday Ornament	B
243	Machine Embroidery	Table Linen (breadbasket liner, napkins, tablecloth, towel, etc.)	B
244	Machine Embroidery	Original Design	B
245	Machine Embroidery	Miscellaneous machine embroidery	B

Class	Division	Exhibit Description	Key
246	Sewing	Baby Item	B
247	Sewing	Decorated Hat (inc. Red Hats)	A
248	Sewing	Appliquéd decoration (on clothing)	B
249	Sewing	Blouse or shirt	B
250	Sewing	Sweatshirt w/painted decoration	A
251	Sewing	Decorated Sweatshirt (design other than cross-stitch or paint)	A
252	Sewing	Dress, Party (dressy, evening gown)	B
253	Sewing	Dress, With Sleeves	B

254	Sewing	Dress, Sleeveless	B
255	Sewing	Tote Bag	A
256	Sewing	Jacket	B
257	Sewing	Jumpsuit or jumper	B
258	Sewing	Shorts or slacks	A
259	Sewing	Skirt	A
260	Sewing	Vest	A
261	Sewing	Quilted clothing item (vest, skirt, etc.)	B
262	Sewing	Handbag/purse	B
263	Sewing	Miscellaneous clothing article	A

Class	Division	Exhibit Description	Key
264	Quilt	Antique Quilt (over 50 years old)	C
265	Quilt	Appliqué	C
266	Quilt	Baby (smaller than twin bed)	C
267	Quilt	Cathedral Window	C
268	Quilt	Crazy	C
269	Quilt	Cross-Stitched (counted)	C
270	Quilt	Cross-Stitched (stamped)	C
271	Quilt	Embroidered – Hand	C
272	Quilt	Machine Embroidery/Cross Stitch	C
273	Quilt	Pieced	C
274	Quilt	Quilted Wall Hanging/Table Runner	C
275	Quilt	Golden Age (seniors only)	C
276	Quilt	Miscellaneous Quilt	C
277	Quilt	Machine Quilted by Quilt Maker	B
278	Quilt	Group made (church, club, etc.)	B

DOLL EXHIBITS

(These exhibits will be received between the hours of 8 a.m. and 6 p.m.
Tuesday, June 29, 2010.)

1. Exhibits must have been made by exhibitor between July 2009 and date of 2010 Fair.
2. All General Rules and Regulations apply, including those specific to Doll Exhibits.
3. An individual may enter as many classes as they wish in the division, but can enter **only one item per class.**
4. **Amateurs only!**

Class	Division	Exhibit Description	Key
279	Doll	Handmade Porcelain Doll	B
280	Doll	Handmade Ceramic Doll	B
281	Doll	Antique Reproduction Doll	B
282	Doll	Modern Baby/Toddler Doll	B
283	Doll	Modern Teen/Adult Doll	B
284	Doll	Doll Clothing, Crocheted	B
285	Doll	Doll Clothing, Fabric	B
286	Doll	Soft Sculptured Doll	B
287	Doll	Small Doll, under 10" tall	B
288	Doll	For Seniors Only (Age 65+)	B

CRAFT EXHIBITS

(These exhibits will be received between the hours of 8 a.m. and 6 p.m.
Tuesday, June 29, 2010.)

1. Exhibits must have been made by exhibitor between July 2009 and date of 2010 Fair.
2. All General Rules and Regulations apply, including those specific to Craft Exhibits
3. An individual may enter as many classes as they wish in the division, but can **enter only one item per class.**
4. **No art in frames or under glass.** Sturdy plastic over matt board acceptable.
5. **Amateurs only!** No personal cards or business cards allowed.

Class	Division	Exhibit Description	Key
289	Handicraft – Open	Leather craft, Kit	A
290	Handicraft – Open	Leather craft, Original	A
291	Handicraft – Open	Model Kit – Airplane	B
292	Handicraft – Open	Model Kit – Automobile	B
293	Handicraft – Open	Model Kit – Miscellaneous	B
294	Handicraft – Open	Model – original design (not from kit)	B
295	Handicraft – Open	Modeling Clay	B
296	Handicraft – Open	Plastic Canvas Item	B
297	Handicraft – Open	Papier-Mache´	B
298	Handicraft – Open	Button Crafts (jewelry, etc.)	B
299	Handicraft – Open	Fuse Beads	B
300	Handicraft – Open	Creative Craft: toothpicks, rolled paper, popsicle sticks	B
301	Handicraft – Open	Creative toy – stuffed	B
302	Handicraft – Open	Creative toy – other than stuffed, knitted, or woodcraft	B
303	Handicraft – Open	Item made from recycled materials	B
304	Handicraft – Open	Jewelry – Paper or Fabric	B
305	Handicraft – Open	Jewelry – Beaded	B
306	Handicraft – Open	Jewelry – other than listed above	B
307	Handicraft – Open	Miscellaneous Handicraft	B
308	Handicraft – Open	For Seniors Only (Age 65+)	B

Youth Handicraft – Y1 and Y2 only

289y	Handicraft – Youth	Building Sets, Kit (Legos, etc.)	A
290y	Handicraft – Youth	Building Sets, Original (Legos, etc.)	A
291y	Handicraft – Youth	Model Kit – Airplane	B
292y	Handicraft – Youth	Model Kit – Automobile	B
293y	Handicraft – Youth	Model Kit – Miscellaneous	B
294y	Handicraft – Youth	Model – original design (not from kit)	B
295y	Handicraft – Youth	Modeling Clay	B
296y	Handicraft – Youth	Plastic Canvas Item	B
297y	Handicraft – Youth	Papier-Mache´	B

298y	Handicraft – Youth	Button Crafts (jewelry, etc.)	B
299y	Handicraft – Youth	Fuse Beads	B
300y	Handicraft – Youth	Creative Craft: toothpicks, rolled paper, popsicle sticks	B
301y	Handicraft – Youth	Creative toy – stuffed	B
302y	Handicraft – Youth	Creative toy – other than stuffed, knitted, or woodcraft	B
303y	Handicraft – Youth	Item made from recycled materials	B
304y	Handicraft – Youth	Jewelry – Paper or Fabric	B
305y	Handicraft – Youth	Jewelry – Beaded	B
306y	Handicraft – Youth	Jewelry – other than listed above	B
307y	Handicraft – Youth	Miscellaneous Handicraft	B
308y	Handicraft – Youth	Puppets	B
309y	Handicraft – Youth	Magnetic Building Sets	B

Class	Division	Exhibit Description	Key
312	Home Craft	Soap	B
313	Home Craft	Embossed Item	B
314	Home Craft	Ink Stamped Item	B
315	Home Craft	Fabric Painting	B
316	Home Craft	Flags	B
317	Home Craft	Hooked Item (other than Wall Hanging/Picture)	B
318	Home Craft	Stenciling	B
319	Home Craft	Tole' Painting	B
320	Home Craft	Decorative Painting (not tole')	B
321	Home Craft	Floor Cloth	
322	Home Craft	Hooked Item (other than Wall Hanging Picture)	B
323	Home Craft	Candle	B
324	Home Craft	Fabric Covered Boxes	B
325	Home Craft	Basket – theme	B
326	Home Craft	Hand Painted Glass	B
327	Home Craft	Yard Art	B
328	Home Craft	Miscellaneous Home Craft	B
329	Home Craft	For Seniors Only (Age 65+)	B
330	Home Craft	Homespun or Felted Wool Item	B

Class	Division	Exhibit Description	Key
332	Holiday Decorations	Christmas Ornament	B
333	Holiday Decorations	Nativity	B
334	Holiday Decorations	Santas	B
335	Holiday Decorations	Door Decoration (other than wreath)	B
336	Holiday Decorations	Hanukah	B
337	Holiday Decorations	Kwanza	B
338	Holiday Decorations	Valentine's Day	B
339	Holiday Decorations	Fourth of July	B

340	Holiday Decorations	Fall (Halloween, Thanksgiving)	B
341	Holiday Decorations	Holiday other than those above	B

Class	Division	Exhibit Description	Key
344	Woodworking	Wood Carving, Wildlife	B
345	Woodworking	Wood Carving, Natural	B
346	Woodworking	Wood Burning	B
347	Woodworking	Woodcraft, Whittling	B
348	Woodworking	Woodcraft, Toys/Games	B
349	Woodworking	Woodcraft, Scroll Cut	B
350	Woodworking	Bird House	B
351	Woodworking	Bird Feeder	B
352	Woodworking	Garden Sign	B
353	Woodworking	Woodcraft, Miscellaneous	B
354	Woodworking	Wood Turning	B
355	Woodworking	Kitchen Utensil (bowl, spoons, etc.)	B

Class	Division	Exhibit Description	Key
358	Ceramics/Clay	Figurine	B
359	Ceramics/Clay	Wildlife	B
360	Ceramics/Clay	Flat Piece	B
361	Ceramics/Clay	Original Design	B
362	Ceramics/Clay	Ornament	B
363	Ceramics/Clay	Hand Built Item	B
364	Ceramics/Clay	Wheel Thrown Item	B
365	Ceramics/Clay	Original Design (combination) Item	B
366	Ceramics/Clay	Miscellaneous	B

Class	Division	Exhibit Description	Key
370	Art – Open	Calligraphy	B
371	Art – Open	Drawing – Ink/Pen	B
372	Art – Open	Drawing – Pencil/Charcoal	B
373	Art – Open	Drawing – Marker	B
374	Art – Open	Drawing-Color, other than those above	B
375	Art – Open	Metal Art/Metal Jewelry (open enameling, casting, etc.)	B
376	Art – Open	Stamping	B
377	Art – Open	Multimedia Art Piece	B
378	Art – Open	Painting - Acrylic	B
379	Art – Open	Painting - Oil	B
380	Art – Open	Painting - Water Color	B
381	Art – Open	Print Making	B
382	Art – Open	Scrapbooking – 2 page layout	B
383	Art – Open	Cartooning	B
384	Art – Open	Stained Glass	B
385	Art – Open	Computer Generated Drawing	B
386	Art – Open	Mosaic	B

387	Art – Open	3-Dimensional	B
388	Art – Open	Miscellaneous Art	B
Youth Art – Y1 and Y2 Only			
370y	Art – Youth	Calligraphy	B
371y	Art – Youth	Drawing – Ink/Pen	B
372y	Art – Youth	Drawing – Pencil/Charcoal	B
373y	Art – Youth	Drawing – Marker	B
374y	Art – Youth	Drawing-Color, other than those above	B
375y	Art – Youth	Metal Art/Metal Jewelry (open enameled, casting, etc.)	B
376y	Art – Youth	Stamping	B
377y	Art – Youth	Multimedia Art Piece	B
378y	Art – Youth	Painting - Acrylic	B
379y	Art – Youth	Painting - Oil	B
380y	Art – Youth	Painting - Water Color	B
381y	Art – Youth	Print Making	B
382y	Art – Youth	Scrapbooking – 2 page layout	B
383y	Art – Youth	Cartooning	B
384y	Art – Youth	Stained Glass	B
385y	Art – Youth	Computer Generated Drawing	B
386y	Art – Youth	Mosaic	B
387y	Art – Youth	3-Dimensional	B
388y	Art – Youth	Miscellaneous Art	B

PHOTOGRAPHY EXHIBITS

(These exhibits will be received between the hours of 8 a.m. and 6 p.m. on Tuesday, June 29, 2010.)

1. All General Rules and Regulations apply, including those specific to Photography.
2. All photography (including youth photography) must be the work of the Exhibitor, including the composition determination, set up, and photographing.
3. Exhibits must have been made by exhibitor between July 2009 and date of 2010 Fair.
4. **All photography entries must be mounted on an 11" X 14" mat board.** Unmounted photographs will not be accepted. **Photographs must be 11" X 14" or smaller.**
5. **NO frames and no glass.** Pictures in frames and/or glass will not be accepted.
6. An individual may enter as many classes as they wish in the division, but can enter **Only one item per class.**

7. AMATEURS ONLY!

Class	Division	Exhibit Description	Key
390	Photography – Open	Abstract, Black & White	B
391	Photography – Open	Abstract, Color	B
392	Photography – Open	Group – People, Black & White	B

393	Photography – Open	Group – Animals, Black & White	B
394	Photography – Open	Group – People, Color	B
395	Photography – Open	Group – Animals, Color	B
396	Photography – Open	Landscape, Black & White	B
397	Photography – Open	Landscape, Color	B
398	Photography – Open	Pet Portrait, Black & White	B
399	Photography – Open	Pet Portrait, Color	B
400	Photography – Open	Portrait, Black & White	B
401	Photography – Open	Portrait, Color	B
402	Photography – Open	Scenic, Black & White	B
403	Photography – Open	Scenic, Color	B
404	Photography – Open	Special Effects, Black & White	B
405	Photography – Open	Special Effects, Color	B
406	Photography – Open	Sports Action, Black & White	B
407	Photography – Open	Sports Action, Color	B
408	Photography – Open	Still Life, Black & White	B
409	Photography – Open	Still Life, Color	B
410	Photography – Open	Wildlife Animal – Black & White	B
411	Photography – Open	Wildlife Animal – Color	B
412	Photography – Open	Just for seniors (age 65+)	B
413	Photography – Open	Collage	B
414	Photography – Open	Antique Photography (copy allowed)	B
415	Photography – Open	Scene from a past Salem Fair	B
416	Photography – Open	Vacation Scene	B
417	Photography – Open	Growing Plant(s) - Not a still life or landscape	B
418	Photography – Open	Critter (animal, fowl, insect)	B

Youth Photography – Y1 and Y2 only

Class	Division	Exhibit Description	Key
390y	Photography – Youth	Abstract, Black & White	B
391y	Photography – Youth	Abstract, Color	B
392y	Photography – Youth	Group – People, Black & White	B
393y	Photography – Youth	Group – Animals, Black & White	B
394y	Photography – Youth	Group – People, Color	B
395y	Photography – Youth	Group – Animals, Color	B
396y	Photography – Youth	Landscape, Black & White	B
397y	Photography – Youth	Landscape, Color	B
398y	Photography – Youth	Pet Portrait, Black & White	B
399y	Photography – Youth	Pet Portrait, Color	B
400y	Photography – Youth	Portrait, Black & White	B
401y	Photography – Youth	Portrait, Color	B
402y	Photography – Youth	Scenic, Black & White	B
403y	Photography – Youth	Scenic, Color	B
404y	Photography – Youth	Special Effects, Black & White	B
405y	Photography – Youth	Special Effects, Color	B

406y	Photography – Youth	Sports Action, Black & White	B
407y	Photography – Youth	Sports Action, Color	B
408y	Photography – Youth	Still Life, Black & White	B
409y	Photography – Youth	Still Life, Color	B
410y	Photography – Youth	Wildlife Animal – Black & White	B
411y	Photography – Youth	Wildlife Animal – Color	B
413y	Photography – Youth	Collage	B
414y	Photography – Youth	Antique Photography (copy allowed)	B
415y	Photography – Youth	Scene from a past Salem Fair	B
417y	Photography – Youth	Growing Plant(s) - Not a still life or landscape	B
418y	Photography – Youth	Critter (animal, fowl, insect)	B

COMMUNITY HEALTH CARE CENTERS EXHIBITS

Group projects by participants of nursing homes, retirement homes, assisted living, and adult day care centers or other special health needs groups. (Individual made items may be exhibited in any appropriate individual exhibitor class). This division is specifically for projects that were made, grown, etc. by a **group of health care center participants**. Exhibits must have been made by the group between July 2009 and date of 2010 Fair.

450g	Produce	Fresh Vegetable	C
451g	Plants	Hanging Plant	C
452g	Plants	Planter	C
453g	Baked Goods	Any baked goods	C
454g	Crafts	Jewelry	C
455g	Crafts	Scrapbooking	C
456g	Crafts	Any other	C
457g	Crafts	Dolls	C
458g	Holiday Decorations	Valentine's Day	C
459g	Holiday Decorations	Spring	C
460g	Holiday Decorations	Easter	C
461g	Holiday Decorations	Fourth of July	C
462g	Holiday Decorations	Fall	C
463g	Holiday Decorations	Christmas	C
464g	Holiday Decorations	Hanukah	C
465g	Holiday Decorations	Kwanza	C
466g	Holiday Decorations	Holiday other than those above	C
467g	Photography	Any subject	C
468g	Ceramics	Any	C
469g	Cookies	Any	C
470g	Candies	Any	C
471g	Baked Goods	Any other than cookies	C
472g	Art	Any	C
473g	Sewing	Any	C
474g	Needlework	Any	C

YOUTH CLUB EDUCATIONAL EXHIBITS

1. Selected 4-H Club, vocational club or scout troop may enter exhibit.
2. A design plan for the exhibit must be submitted by June 18, 2010 to:

Youth Club Educational Exhibit

Salem Fair & Exposition

P. O. Box 886

Salem, VA 24153-0866

Exhibits will be selected on the basis of the design plan, educational content and space available. Those selected will be notified to prepare their exhibit.

2. **Prize money:**

1st place - \$40

2nd place - \$35

3rd place - \$30

4th place - \$25

5th place - \$20

6th – 10th place - \$15

2009 SALEM FAIR BEST IN SHOW AWARDS

Fresh Fruit John Keller <small>Exhibitor</small>	Roanoke <small>Town</small>	Berries – 002 <small>Class name/number</small>	Y2 <small>Age group</small>
Fresh Vegetables Barbara Diehl <small>Exhibitor</small>	Eagle Rock <small>Town</small>	Cabbage – 011 <small>Class name/number</small>	Open <small>Age group</small>
Canned Fruit Frances Hale <small>Exhibitor</small>	Salem <small>Town</small>	Peaches - 034 <small>Class name/number</small>	Open <small>Age group</small>
Canned Vegetable Rachel Keller <small>Exhibitor</small>	Roanoke <small>Town</small>	Salsa - 044 <small>Class name/number</small>	Open <small>Age group</small>
Bread Sarah Pope <small>Exhibitor</small>	Roanoke <small>Town</small>	Miscellaneous – 055 <small>Class name/number</small>	Y1 <small>Age group</small>
Cookies James Akers <small>Exhibitor</small>	Christiansburg <small>Town</small>	Miscellaneous – 070 <small>Class name/number</small>	Open <small>Age group</small>
Cake Monica Farris <small>Exhibitor</small>	Salem <small>Town</small>	Fresh Fruit – 083 <small>Class name/number</small>	Open <small>Age group</small>
Candy Sarah Beth Hoyt <small>Exhibitor</small>	Salem <small>Town</small>	Molded Candies – 096 <small>Class name/number</small>	Y1 <small>Age group</small>
Pies Madison Jones <small>Exhibitor</small>	Copper Hill <small>Town</small>	Lemon Meringue – 103 <small>Class name/number</small>	Y1 <small>Age group</small>
Jelly Frances Raymond <small>Exhibitor</small>	Clarksburg, CA <small>Town</small>	Blackberry – 111 <small>Class name/number</small>	Open <small>Age group</small>
Jam Frances Raymond <small>Exhibitor</small>	Clarksburg, CA <small>Town</small>	Strawberry – 131 <small>Class name/number</small>	Open <small>Age group</small>
Preserves Sally Boles <small>Exhibitor</small>	Roanoke <small>Town</small>	Apple Butter – 129 <small>Class name/number</small>	Open <small>Age group</small>

Pickles			
Lydia Altice	Catawba	Chow Chow – 142	Open
Exhibitor	Town	Class name/number	Age group
Plants			
Louella Fesperman	Salem	Any Flowering - 154	Open
Exhibitor	Town	Class name/number	Age group
Cut Flowers			
Janet Obenchain	Roanoke	Miscellaneous Lily – 172	Open
Exhibitor	Town	Class name/number	Age group
Dried Flowers			
Sondra Wertz	Roanoke	Combination Dried & Silk – 184	Open
Exhibitor	Town	Class name/number	Age group
Crocheting			
Shirley Weaver	Roanoke	Afghan – 055	Open
Exhibitor	Town	Class name/number	Age group
Knitting			
Eileen Wessel	Roanoke	Afghan – 196	Open
Exhibitor	Town	Class name/number	Age group
Cross-stitch			
Sue Gross	Salem	Framed Picture on Aida - 208	Open
Exhibitor	Town	Class name/number	Age group
Embroidery			
James Anderson	Moneta	Crewel – 227	Open
Exhibitor	Town	Class name/number	Age group
Machine Embroidery			
Shirley Huffman	Catawba	Accessory – 238	Open
Exhibitor	Town	Class name/number	Age group
Sewing			
Monty Leitch	Pilot	Jacket – 256	Open
Exhibitor	Town	Class name/number	Age group
Quilt			
Lorene White	Salem	Machine quilted by maker – 277	Open
Exhibitor	Town	Class name/number	Age group
Doll			
Tina Stilwell	Max Meadows	Handmade Porcelain – 279	Open
Exhibitor	Town	Class name/number	Age group

Open Handicraft Ruth Thomas	Roanoke	For Seniors Only – 65+ - 308	Open
Exhibitor	Town	Class name/number	Age group
Youth Handicraft Molly Mattox	Salem	Miscellaneous – 307y	Y1
Exhibitor	Town	Class name/number	Age group
Home Craft Mary Brandenburg	Salem	Miscellaneous – 328	Open
Exhibitor	Town	Class name/number	Age group
Holiday Decorations Sharon Henry	Vinton	Christmas Ornament – 332	Open
Exhibitor	Town	Class name/number	Age group
Woodworking J R Weatherford	Salem	Woodcraft, Scroll Cut - 349	Open
Exhibitor	Town	Class name/number	Age group
Ceramics Amber Tribbett	Vinton	Miscellaneous – 366	Y2
Exhibitor	Town	Class name/number	Age group
Open Art Linda Redman	Rustburg	Painting - Oil - 379	Open
Exhibitor	Town	Class name/number	Age group
Youth Art Erika Bailey	Fincastle	Painting – Acrylic – 378y	Y2
Exhibitor	Town	Class name/number	Age group
Open Photography Teresa Reid	Roanoke	Wildlife, Color – 411	Open
Exhibitor	Town	Class name/number	Age group
Youth Photography Joshua Weddle	Roanoke	Scenic, Color – 403y	Y1
Exhibitor	Town	Class name/number	Age group
Adult Health Care Group Snyder Nursing	Salem	Spring Decorations – 459g	Open
Exhibitor	Town	Class name/number	Age group

GENERAL RULES AND REGULATIONS

1. EXHIBITORS ARE ENCOURAGED TO READ THE GENERAL RULES AND THE DEPARTMENTAL RULES.
2. Age Divisions:
 - Youth 1 (Y1) - any youth 13 years of age or younger
 - Youth 2 (Y2) - any youth ages 14 to 19 years old
 - Open (O) - any adult over the age of 19 yearsYouth 1 (Ages 13 and under) and Youth 2 (ages 14 to 19) may exhibit in the appropriate age division or in the open age division (if they wish to be judged against adult entries); however, they may not exhibit in the same class in both age divisions. 4-H members should indicate both 4-H member and age division on registration form.
3. Every exhibitor, concessionaire, employee, or any other person having business on the grounds is required to abide by these rules and regulations or any other rules and regulations that may be formulated by Fair Management. Fair Management reserves for itself the sole and absolute right to construe its rules and regulations, and arbitrarily determine and settle all matters and differences in regard there to.
4. No professional will be allowed to exhibit. A professional is anyone receiving substantial or/and regular income from the sale of his/her baked goods, handicrafts, photography, etc. or from use of this talent/skill. Any exhibit with the © symbol or the term copyrighted is considered to be the work of a professional and is not eligible for exhibit.
5. Fair management reserves the right to extend an invitation to exhibit and the right to refuse an exhibitor or concessionaire without giving reason for such action.
6. All protests must be in writing, must plainly state the complaint, be accompanied by a fee of \$25 which shall be forfeited to the fair in case protest is not sustained, and must be delivered to Fair Management within twelve (12) hours after the cause of protest.
7. The exhibitor or concessionaire assumes all risks of damage or loss, either to person or property for all and every cause whatsoever, including fire, the elements, violation of the law, negligence either on the part of the Salem Fair, its officers, servants, agents, or employees, or other person or persons; and it is further expressly understood and agreed between the exhibitor or concessionaire and Fair Management, that the

Salem Fair incurs no liability or obligation to the exhibitor or concessionaire other than to permit the exhibitor or concessionaire to utilize the grounds of the Salem Fair.

8. Competition is generally open to the world unless otherwise stated in departmental rules. Certain departments are limited and this also will be stated in departmental rules.

9. Exhibitors and concessionaires who participate in the Fair must have a signed contract on file with the Fair Office or if they exhibit their crafts, farm products, and machinery, they must have items entered according to the rules and regulations for the department in which they are participating. **Individual entries are limited to one per class. No one item may be entered in more than one class.**

10. Persons exhibiting may ship their exhibits but Fair Management will not be responsible for any loss, breakage, or damage. Goods must be addressed to the department in which they are entered in care of the Salem Fair, P O. Box 886, Salem, VA 24153. Entries will be received in this manner from June 14, 2010 until June 18, 2010. **No packages will be received unless all transportation charges have been paid.**

11. Exhibits must be delivered to the Superintendent in charge of the Department. All exhibits must be removed according to departmental rules unless arrangements are made in writing before the opening of the Fair and agreed to by Fair Management.

12. The Salem Fair will contract judges for all departments. The Salem Fair reserves the right to substitute judges if necessary.

13. Judges are instructed to award first, second, and third places in all classes with three or more entries.

14. The judges' decision is final!

15. Any exhibitor who interferes with the judging will be promptly excluded from competition; afterwards, the premium or premiums awarded to this individual will be withheld.

16. Fair management reserves the right to reject any exhibit, which does not reflect merit and which would not be a credit to both the exhibitor and the Salem Fair. Also, the right is reserved to reject any exhibit which is deemed objectionable or unsuited for public exhibit. All exhibits are accepted conditionally pending inspection of the article or animal to be exhibited. Any article or animal which proves to be misrepresented or

falsely classed will be rejected and the right of the exhibitor to further participate in the Salem Fair will be denied.

17. **No exhibits** may be **removed** from the Exhibit Area **prior to noon on Sunday, July 11, 2010**. Any exhibits removed prior to checkout time on Sunday, July 11, 2010 will forfeit any premium money won and ribbons earned. Exit of exhibits will begin on Sunday, July 11 at noon. All exhibits must be removed by 6 p.m. on Sunday, July 11, 2010. Goods become property of Fair Management after that time.

18. In all competition, ribbons will be awarded according to the quality and prize money paid accordingly.

19. An exhibitor will **not** be allowed to have more than one entry per class.

20. **No professional will be allowed to exhibit.** A professional is anyone receiving substantial or/and regular income from the sale of his or her baked goods, handicrafts, photography, etc.

21. An exhibitor **may not** exhibit an item previously entered in the Salem Fair.

22. In all classes, there must be at least two entries to constitute competition and different individuals must make these entries. At the discretion of Fair Management, a class with only one entry may be allowed to show and will be awarded second place money and ribbon.

23. Premiums will be paid as soon after the fair as it is possible to audit the books.

24. In paying premiums, no evidence of awards shall be recognized except the entry book properly signed by the superintendent and judge, and not from the ribbons attached to the exhibit. Ribbons sometimes become misplaced.

25. It is understood that if weather conditions are such that Fair Management cannot pay their premiums in full, the exhibitors agree to accept such a proportion of the premiums as Fair Management finds they are able to pay and such payment shall be considered in full settlement of whatever premiums are due.

26. Fair Management will employ police, guards, traffic coordinators and will take every precaution for the safety of the visitors, concessionaires, and exhibitors, but assumes no liability for personal injury, or loss, or

damage to any property of the exhibitor, visitor, or concessionaire, etc. due to theft, fire, tornado, weather conditions, or other causes.

27. The Salem Fair will **absolutely not** issue pass-out checks, rain checks, or refunds on tickets or ticket exchanges.

28. No person will be allowed to distribute advertising matter on the grounds except from the contracted businesses. The tacking or posting of advertisements, bills, cards, etc., other than within the space occupied by exhibitor is strictly prohibited.

29. Distribution of handbills, fliers, heralds, etc. will not be permitted under any circumstances. Anyone violating this rule is liable to a fine or expulsion from the grounds or both.

30. No art or photos in frames or under glass.

31. Due to space limitations, all exhibits may not be available for public viewing. Fair management will make every attempt to display all exhibits.

Premium Key for Classes 001-474g

	A	B	C
First Place	\$4.00	\$5.00	\$6.00
Second Place	\$3.00	\$4.00	\$5.00
Third Place	\$2.00	\$3.00	\$4.00

YOUTH FREE RIDE PASS

Any **youth** who enters **at least three (3) exhibits** will receive a free ride pass for Monday, July 5, 2010.

FARM PRODUCTS RULES AND REGULATIONS

Classes 001 through 026
(GARDEN PRODUCE)

1. All farm products (garden produce) will be received between the hours of 8 a.m. and 6 p.m. on Tuesday, June 29, 2010.

2. All farm products must be grown by the exhibitor between July 2009 and 2010 Fair registration.

3. Only one entry per class is permitted.

4. Entries must be **correctly labeled**, including the variety name. They must be placed in **substantial containers** (no paper plates or plastic bags, please).
5. No farm products will be returned unless exhibitor makes a request at time of entry.
6. All perishable items will be kept on display until they begin to deteriorate. At this time, they will be disposed of at the discretion of Fair Management.
7. Garden baskets are judged by quality, number of vegetables, and freedom of injury, appearance, and a balance of leafy/root vegetables.
8. Entries calling for a precise number of produce will be disqualified if minimum number is not met.
9. **Read the General Rules and Regulations carefully.**

HOMEMAKING, HORTICULTURE, HANDICRAFT, ART, AND PHOTOGRAPHY RULES AND REGULATIONS

(Classes 030 through 418y)

1. All food and horticulture exhibits will be received at the Civic Center between the hours of 8 a.m. and 6 p.m. on Tuesday, June 29, 2010. All the needlework, handicraft, art, and photography exhibits will also be received between the hours of 8 a.m. and 8 p.m. on Tuesday, June 29, 2010.
2. Exhibitor Entry Forms must be filled out as completely as possible by exhibitor before turning in exhibits at the registration table. Make sure all entries are listed on entry form and that exhibits are in the correct classes.
3. No exhibits may be removed from the Exhibit Area prior to noon on Sunday, July 11, 2010. Any exhibits removed prior to checkout time on Sunday, July 11, 2010 noon will forfeit any premium money won and ribbons earned. Exit of exhibits will begin on Sunday, July 11, 2010 at noon. All exhibits must be removed by 6 p.m. on Sunday, July 11, 2010. Goods become property of Fair Management after that time.
4. **All canned goods** must be in **standard Mason jars** and must have been canned between July 2009 and 2010 Fair registration. Rings must be on jars. Rusty lids are not to be used. No food coloring allowed.

Jars must be labeled on the bottom as to contents and date canned. **Entries** may be **opened and tasted by the judges**.

5. All candy and baked goods must be on sturdy plastic, Styrofoam, or foil plates (no paper plates, please). Rules require entire cake to be exhibited except where noted in class listings for judging. No mix cakes are allowed unless specified in class.

6. All food items must be accompanied with the recipe printed on a 3" x 5" card. By entering a food item, exhibitor gives Fair Management the right to publish recipe with exhibitor name and city. Recipe becomes property of the Fair.

7. ***All clothing must be accompanied by a hanger.***

8. No art or photos in frames or under glass. Exhibitors will be asked to remove frames and glass before art or photography exhibits can be accepted.

9. All Homemaking and Handicraft items must have been made between July 2009 and 2010 Fair registration except where noted. (The exceptions are the Antique Embroidery class and the Antique Quilt class.)

10. Exhibitors may enter only **one item per class**.

11. All perishable items will be kept on exhibit until they begin to deteriorate. At this time, they will be disposed of at the discretion of the Fair Management. Perishable items, including flowers, may be replaced with like items once by the exhibitor during the fair.

12. ***No professional will be allowed to exhibit.*** A professional is anyone receiving substantial and/or regular income from the sale of his or her baked goods, handicrafts, photography, etc.

13. Youth 1 (ages 13 and under) and Youth 2 (ages 14 to 19) may exhibit in the appropriate age division or in the open age division; however, they **may not** exhibit in the same class in both age divisions.

14. Any exhibit with the © symbol or term copyrighted is considered to be the work of a professional and is not eligible for exhibit in the fair.

15. **READ all the General Rules and Regulations CAREFULLY.**

Virginia Cooperative Extension

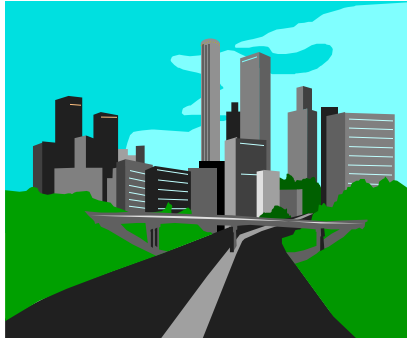
4-H YOUTH DEVELOPMENT

- Cloverbuds - ages 5-8
- 4-H Members - ages 9-19
- Teen volunteers - age 14 +
- Adult volunteers
- Community Clubs
- School Enrichment
- Leadership Development
- Parliamentary Procedure
- Projects
- Activities
- Events
- Camps
- Congress for Teens



4-H VOLUNTEER OPPORTUNITIES

- Community Club
- Cloverbud
- Activity/Event
- Recruiter Coach



FAMILY AND CONSUMER SCIENCES

- Health
- Nutrition and Foods
- Expanded Food and Nutrition Education Program (EFNEP)
- Financial Management
- Smart Choices Nutrition Education Program (SCNEP)
- Parenting and Families
- Housing and Family Structures

AGRICULTURE AND NATURAL RESOURCES

- Natural Resources
- Environmental Management
- Crops and Grains
- Livestock
- Farm Business Marketing and Management
- Forestry
- Wildlife
- Commercial Horticulture

VOLUNTEER OPPORTUNITIES

- Extension Leadership Council
- Master Gardeners
- 4-H Volunteer
- Family and Community Educators

COME BY OUR OFFICE:

(Reaching the Roanoke Valley)

Phone: 540-772-7524

3738 Brambleton Ave., SW

Roanoke, VA 24018-3639

Master Gardener Greenline

Phone: 540-776-7178